

ENP4891

Slim series type-LV Residential BESS



Auto ID



Automatically assign any host



Smart Temperature Control



Smart parallel technology compatible with batteries with different SOC and voltages



Technical Specification

Model no	ENP4891
Battery Module energy	4.36kWh
Useable Energy	4.1kWh
Max output power	4kWh
Peak Output Power	5kW
Nominal voltage	48V
Operating Voltage Range	40V-55V
Dimension(W/D/H)	450x560x89mm
Weight	36Kg
Installation	Rack Mount , Wall mount , Stack mount , Floor mount
Operating Tempertaure	-10 C~ + 55C
Operating altitude	0-3,000 m (Derating above 2,000 m)
Environment	InDoor
Relative humidity	5%~95%
Cooling	Natural Convection
Protection rating	IP20
Noise Emission	0 dB
Cycle Life	>6000 (@25C, DoD 90%)
Display	SOC Status indicator LED Indicator
Cell Technology	Lithium iron phosphate (LiFePo4)
Scalability	Max 64 Systems in parallel operation
Communication Ports	CAN / RS485
Warranty	5 Years Standard (10 Years Optional)



Superior Efficiency
Experience maximum efficiency with up to 90% usable energy.



IP20 Protection Rating
Modular designer, natural cooling, indoor use



Flexible Investment Options
Supports up to 64 units in parallel, with a total capacity of up to 327 kWh.



Effortless Installation
Modular design allows for quick and seamless integration.



Exceptional reliability
Our LFP-based battery technology ensures consistently high performance.



Expandable Capacity
Effortlessly combine multiple units to increase energy output as needed.

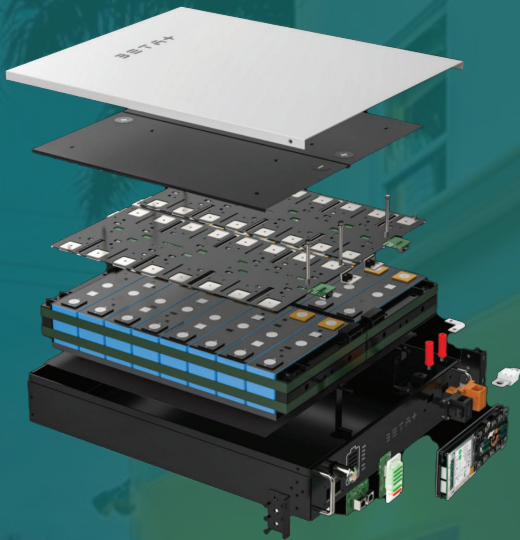


Enhanced Safety Features
Intelligent temperature control guarantees battery safety and longevity.

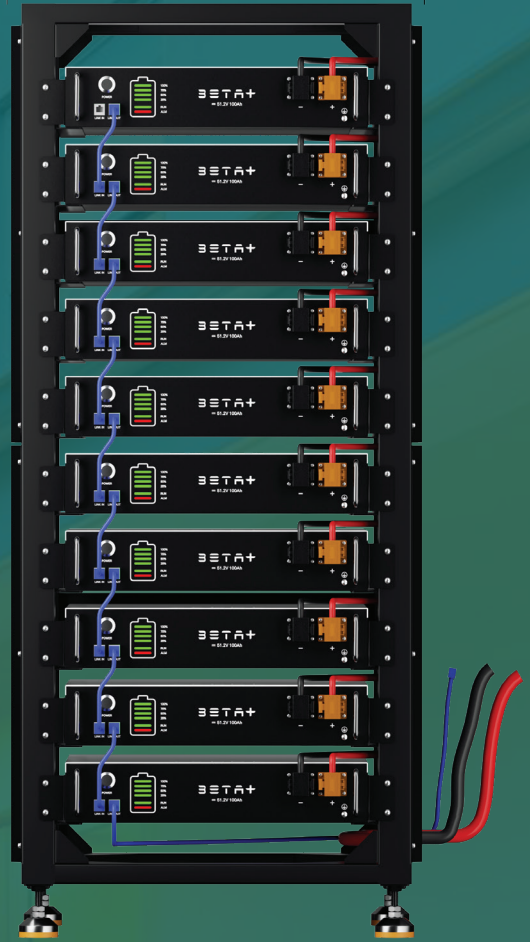


Extended Service Life
Optimized cycle life exceeds 6000 cycles for long-lasting reliability.

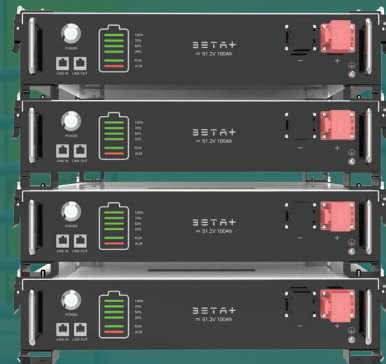
Product Placement



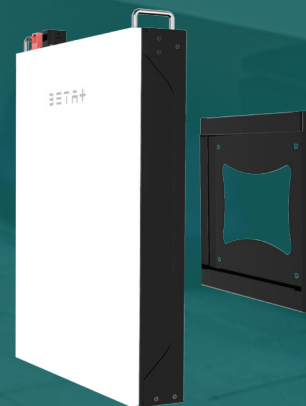
Rack Mount



Stack Mount



Cabinet



Wall Mount